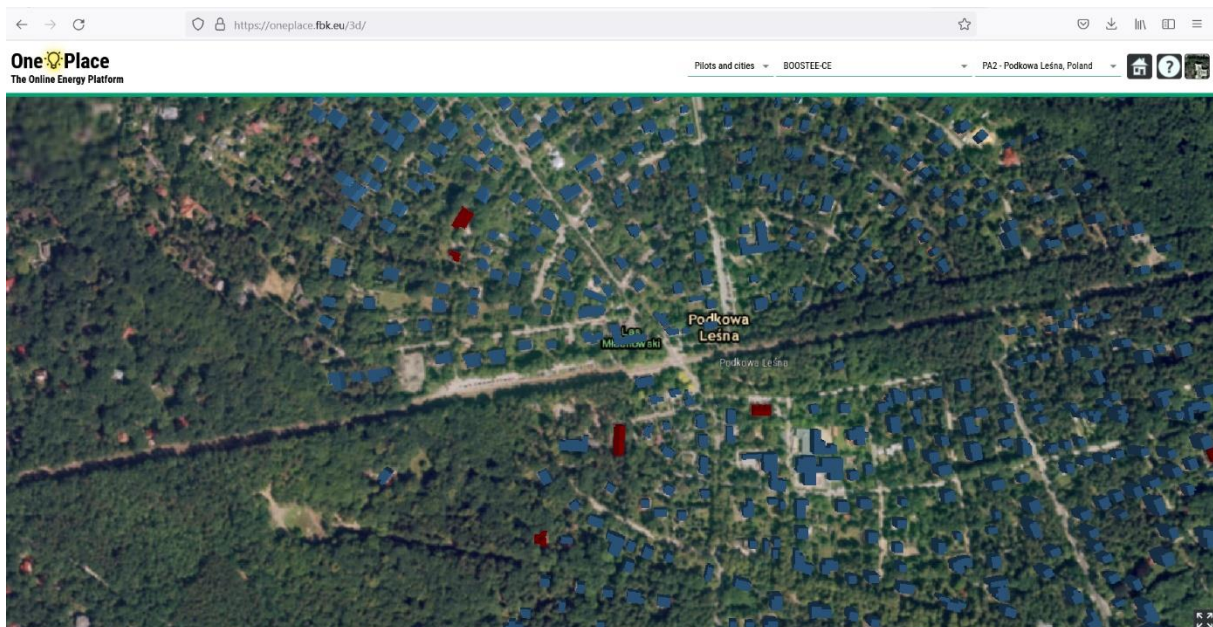


The MAE uses tools to improve energy efficiency as part of the TARGET-CE project

From the beginning of the second quarter of 2020, Mazovia Energy Agency has been actively involved in the implementation of the TARGET-CE project, the main goal of which is to use and capitalize previously developed technical and non-technical tools aimed at improving the energy efficiency of public buildings, including schools, public administration buildings and buildings historical.

The project will use the experience and solutions collected and developed in the already completed projects Interreg Central-Europe, Interreg Europe and Horizon2020, such as: BOOSTEE-CE, ENERGY @ SCHOOL, FEEDSCHOOLS, eCentral, CitiEnGov, EMPOWER, GreenSoul and PANEL2050. As part of the project, Mazovia Energy Agency is to refine and implement in the OnePlace platform dedicated to the TARGET-CE project the results of projects that it has carried out in the past: EMPOWER and PANEL2050.

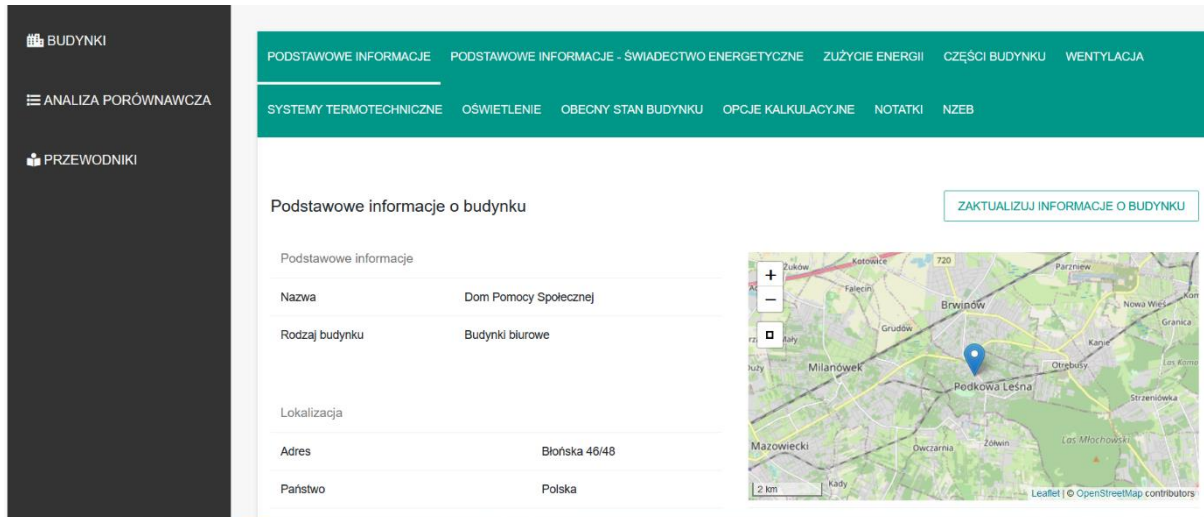
In addition, as part of a pilot action in the area of the City of Podkowa Leśna, Mazowiecka Energy Agency will also implement other improved tools under the TARGET-CE project. These tools are to be the OnePlace Platform, and more specifically the 3D Energy Monitoring System located on the platform and the Living EPC Tool as part of the eCentral project.



View of the City of Podkowa Leśna in the BOOSTEE-CE 3D Energy Management System

As part of the use of these tools, 7 public buildings located in the City of Podkowa Leśna will be imported to them, including the buildings of the City Hall, Social Welfare Center, the Center for Culture and Civic Initiatives, the Public Library, the "Kasyno" Palace and two municipal buildings.

These tools will increase the possibilities of optimizing energy consumption in buildings, their better management, as well as the possibility (in the case of EPC Living Tool) to develop a concept for energy renovation of buildings.



The screenshot shows the 'Podstawowe informacje o budynku' (Basic building information) section of the EPC Living Tool. The interface includes a dark sidebar with navigation options: 'BUDYNKI', 'ANALIZA PORÓWNAWCZA', and 'PRZEWODNIKI'. The main content area has a green header with tabs: 'PODSTAWOWE INFORMACJE', 'PODSTAWOWE INFORMACJE - ŚWIADCTWO ENERGETYCZNE', 'ZUŻYCIE ENERGII', 'CZĘŚCI BUDYNKU', and 'WENTYLACJA'. Below the header, there are sub-tabs: 'SYSTEMY TERMOTECNICZNE', 'OŚWIETLENIE', 'OBECNY STAN BUDYNKU', 'OPCJE KALKULACYJNE', 'NOTATKI', and 'NZEB'. The 'Podstawowe informacje o budynku' section contains a table with the following data:

Podstawowe informacje	
Nazwa	Dom Pomocy Społecznej
Rodzaj budynku	Budynki biurowe
Lokalizacja	
Adres	Błońska 46/48
Państwo	Polska

To the right of the table is a map showing the location of the building in Podkowa Leśna, with a blue pin and a 'ZAKTUALIZUJ INFORMACJE O BUDYNKU' button.

View of the building of the Social Welfare Center in Podkowa Leśna in EPC Living Tool

In addition, as part of the activities in the project, it will be possible to obtain information on the OnePlace platform, which will include both access to other tools used and adapted within the project, good practices from all over Europe, strategies and action plans, as well as financial mechanisms, as well as promotional and educational materials on energy efficiency for all entities implementing energy efficiency improvement projects, including local and regional authorities, small and medium-sized enterprises or other energy agencies.

The main goal of the project and activities carried out in the city of Podkowa Leśna is to increase energy efficiency, promote activities related to increasing energy efficiency and ICT tools, as well as increasing the ability of local authorities to introduce solutions aimed at implementing solutions improving energy efficiency.